

## Original Article

**Running Title:** CRS and HIPEC for Peritoneal Surface Malignancy

Received: August 19, 2020; Accepted: October 30, 2021

### **Cytoreductive Surgery and Hyperthermic Intraperitoneal Chemotherapy for Peritoneal Surface Malignancy: Initial Report from Shiraz Surgical Oncology Group**

Majid Akrami<sup>\*</sup>, MD, Samad Khezri<sup>\*</sup>, MD, Sedigheh Tahmasebi<sup>\*</sup>, MD, Mohammad Yasin Karami<sup>\*♦</sup>, MD, Zahra Shiravani<sup>\*\*</sup>, MD, Vahid Zangouri<sup>\*\*</sup>, MD, Abdolrasoul Talei<sup>\*\*</sup>, MD, Nazanin Karimaghaei<sup>\*\*\*</sup>, MD

<sup>\*</sup>*Breast Diseases Research Center, Shiraz University of Medical Sciences, Shiraz, Iran*

<sup>\*\*</sup>*Gynecology Oncology Division, Department of Obstetrics and Gynecology, School of Medicine, Shiraz University of Medical Sciences, Shiraz, Iran*

<sup>\*\*\*</sup>*Maternal-Fetal Medicine Research Center, Shiraz University of Medical Sciences, Shiraz, Iran*

<sup>\*\*\*\*</sup>*Core Medical Trainee, Northumbria Healthcare NHS Foundation Trust, Newcastle upon Tyne, U.K.*

#### **♦Corresponding Author**

Mohammad Yasin Karami, MD

Department of Surgical Oncology,

Shiraz University of Medical Sciences, Shiraz, Iran

Tel/Fax: +98-7132303029

Email: [yasinkarami@gmail.com](mailto:yasinkarami@gmail.com)

#### **Abstract**

**Background:** Hyperthermic intraperitoneal chemotherapy (HIPEC) is increasingly used in the treatment of peritoneal carcinomatosis (PC). The objective was to evaluate the outcomes of cytoreductive surgery (CRS) and HIPEC in our center.

**Method:** In this retrospective study, data were collected from 43 patients with PC who underwent CRS-HIPEC since 2016, at Faghihi Hospital of Shiraz University of Medical Sciences. Outcomes were collected and analyzed. Analyses were conducted through SPSS 23. P-value < 0.05 was considered to be statistically significant.

**Results:** The mean age of the patients was  $52.23 \pm 11.82$  years. The participants in the study analysis consisted of 36 female (83.7%) and seven male patients (16.3%). The most common primary tumor was ovarian cancer (62.8%). Completeness of the cytoreduction score of CC0/CC1 was obtained in 87.7% of the patients. The overall and 60-day postoperative mortality rates were 27.9% and 7%, respectively. The 1- and 3-year overall survivals respectively were 88% and 60%.

**Conclusion:** Our study supports that employing CRS and HIPEC for PC is feasible with acceptable morbidity in our center.

**Keywords:** Peritoneal malignancy, Drug therapy, Cytoreductive surgical procedures

## **Introduction**

Peritoneal surface metastases occur from a majority of the pelvis or abdomen malignancies. Once peritoneal carcinomatosis (PC) is diagnosed, a decision regarding palliative or aggressive cytoreductive surgery (CRS) and hyperthermic perioperative intraperitoneal chemotherapy (HIPEC) should be made.<sup>1</sup> PC has been associated with poor prognosis and low quality of life and is considered as an end-stage condition with few effective treatments.<sup>2</sup>

In the last decade, CRS and HIPEC have been applied as hopeful treatments for several patients with PC of different originating cancers, such as appendiceal cancer, malignant peritoneal mesothelioma, colon cancer, and ovarian cancer.<sup>3-6</sup> Aggressive CRS/HIPEC are the treatments of choice for selected cancer patients with PC.

At the Surgical Oncology Department of Faghihi hospital affiliated to Shiraz University of Medical Sciences, CRS and HIPEC have been used as the treatment of PC since 2016.

Our center is one of the first centers in the Middle East and an approved cancer surgery center in the Iran employing CRS and HIPEC as the treatment of peritoneal surface metastasis.

In the recent year, the management of PC has changed around the world. CRS and HIPEC became the standard treatment for PC secondary to the ovarian cancer and the colorectal cancer. Prior to HIPEC, patients did not have several choices except palliative support and waiting during the few months they were told to have. Meanwhile, the survival period will increase to years and outcomes will be improving when using CRS and HIPEC treatment.

The aim of this study was to report these treatment approach outcomes in terms of survival, morbidity, and mortality rate and to

identify clinical and pathologic prognostic factors for survival in our center.

## **Materials and Methods**

This single-center retrospective study evaluated the outcomes of CRS and HIPEC in 43 PC patients at Shiraz University of Medical Sciences in Faghihi hospital with HIPEC machine since 2016. To the best of our knowledge, this is the second published report of patients with PC treated using CRS and HIPEC in Iran.

In this retrospective cross-sectional study, the data were collected from a total of 43 patients with peritoneal surface malignancy (PSM) originated from colorectal, appendiceal, mesothelioma, stomach, and gynecological origins, who underwent cytoreductive surgery and hyperthermic intraperitoneal chemotherapy via HIPEC machine since 2016 at the Surgical Oncology Department of Faghihi educational hospital affiliated to Shiraz University of Medical Sciences. We included data from all the patients, including a peritoneal cancer index (PCI)<sup>7</sup> less than 20/39 and fewer than three contiguous segments of liver metastasis according to the Coinaud definition<sup>8</sup> and without extensive small bowel involvement.

Moreover, 1- and 3-year survival rates along with post-operation mortality and morbidity rates were reported. Informed consent was obtained. We gathered the patients' characteristics and primary cancer characteristics and histopathology grade, PCI<sup>9</sup> for PC, intraoperative and postoperative data<sup>10</sup> including CRS completeness (CC0-3) data, duration of HIPEC, and kind of the drug used, post-operative morbidities, major morbidity (Clavien-Dindo 3 and 4),<sup>11</sup> overall and 60 days postoperative mortality, and overall survival (OS), disease-free survival (DFS), recurrence rate, and 1- to 3-year survival.

### ***Cytoreductive surgery and HIPEC procedure***

At laparotomy, via a long midline incision, an abdominal exploration and evaluation of the resectability of the lesions was carried out. Careful dissection was performed with the purpose of eliminating all the visible tumor nodules. The extent of PC was examined utilizing PCI and the success of CRS was evaluated with the completeness of CRS score (CSS), as previously described. The aim of CRS was the removal of all gross tumors and involved tissues, peritoneum and supracolic omentum in all the patients. All HIPEC procedures were carried out with open abdomen by use of HIPEC device immediately after the completion of CRS. Temperature probes were placed on the inflow and outflow tubing and were monitored continuously. A perfusion circulation was recognized with about 3 L of Ringer's lactate. Flow rates of about 1.2 L/min were continued with a HIPEC device. Total planned perfusion time following the initial addition of chemotherapy was typically 90-110 minutes and the planned outflow temperature was 42 °C. In heated intraperitoneal chemotherapy through HIPEC device, Mitomycin C 30 mg and 10 mg respectively at 0 and 45 minutes was entered into the abdomen and circulated for 90 minutes for colorectal, appendiceal, and PseudoMyxoma Peritonei (PMP).

CDDP Cisplatin 50 mg/m<sup>2</sup> at time 0 and Doxorubicin 15mg/m<sup>2</sup> at time 0 were entered into the abdomen and circulated for 90 minutes for primary peritoneal carcinomatosis.

CDDP Cisplatin 75mg/m<sup>2</sup> at time 0 was entered into the abdomen and circulated for 90 minutes for ovarian cancer PC.

### ***Statistical analysis***

The statistical analyses were carried out through statistical package for the social sciences (version 23; IBM SPSS Inc. Chicago, IL, USA). All the data were

collected retrospectively and descriptive statistics were generated for all measures, including means, median, ranges, and standard deviations for continuous measures and frequencies and proportions for categorical data. Time-events values were given in median and a 95% confidence interval (CI). Overall survival (OS) rates were estimated with Kaplan-Meier product-limit method and reported with a confidence interval (95% CI). Survival was calculated from the time of first complete cytoreduction to death or the present time.

### **Results**

The mean age of the patients was 52.23 ± 11.82 years. The participants in the study analysis consisted of 36 females (83.7%) and seven (16.3%) males. The most common primary tumor location was in the ovary (62.8%). The second most prevalent primary tumor was colon cancer (18.6%).

A completeness of cytoreduction (CC) score of CC0/CC1 was obtained in 87.7% of the patients (73.7% and 14%).

The 60-day postoperative mortality rate was 6.97% and 11.62% of the patients developed a postoperative complication, such as leakage and collection.

Wound infection and post-operation obstruction were reported in two patients. Pulmonary thromboembolism and deep vein thrombosis, pancreatitis, and fistula were not found in the patients.

Three patients were re-operated due to anastomosis leakage, collection formation, and colostomy necrosis.

In addition, 18.59% of the patients developed grade 3 and 4 of Dindo-Clavien classification for post-operation complications.

The mean PCI was 8.79 ± 5.83. (Range: 1-20). The mean of hospital and ICU stay respectively were 9.16±8.86 and 3.6 ± 7.02 days. The mean of surgery duration was 368.79 ± 95.88 minutes (range: 249–670).

The mean intraoperative bleeding was  $528.84 \pm 564.64$  cc (range: 20-2500).

The overall mortality rate was 27.9%. The overall 60-day postoperative mortality rate was 6.97%. Demographic, procedure, and survival data are presented in table 1. The follow-up period of the study was 30 months. The 1- and 3-year OS were 88% and 60%, respectively (Figure 1).

## Discussion

During the short period of our work, the mean PCI was  $8.79 \pm 5.83$ . (Range: 1-20). CC0-CC1 cytoreductive was accomplished in 87.7% of the patients. Additionally, the 60-day postoperative and overall mortality rates were 6.97% and 27.95, respectively. The 1- and 3-year OS rates respectively were 88% and 60%.

Recent studies have shed light on the positive effect of HIPEC on OS when CC0 and CC1 cytoreduction are achieved. CRS and HIPEC, most commonly with a platinum and Taxane combination, have become the standard treatment for PC of ovarian cancer.

Munoz-Casares et al. showed that the 5-year OS in patients with R0 cytoreduction for primary ovarian cancer was 63%. They recommended that CRS plus HIPEC is currently an excellent surgical approach to achieve high rates of complete cytoreduction and improve survival in patients with PC from ovarian cancer.<sup>12</sup>

Nikeghbalian et al.<sup>2</sup> on their study on 30 patients with different origin PCs via cardiac pump machine using close method from 2008 to 2016 in Iran revealed the 80% CC0/CC1 and the overall mortality rate of 20%. The 1- and 4-year OS rates were 89% and 54%, respectively.

In a multi-institutional study, 10- and 15-year survival rates of 63% and 59% were reported for 2298 patients with pseudomyxoma peritonei from appendiceal origins treated with CRS and HIPEC.<sup>13</sup>

Helm and colleagues' systematic review study showed that complete CRS was achieved in 67% of the cases of malignant peritoneal mesothelioma and 3- and 5-year OS rates were 59% and 42%, respectively.<sup>14</sup>

A study by Glehen et al. on 150 patients with CRS and HIPEC for PC of gastric origin, demonstrated a 5-year survival rate of 13%.<sup>15</sup>

HIPEC is the standard of care for metastatic appendiceal cancer and peritoneal mesothelioma in the United States and metastatic colon cancer in Europe in well-selected patients.<sup>16</sup>

The 5-year survival rate varies from 12%-66% for ovarian cancer PC.<sup>17-19</sup> Primary ovarian cancer was the most prevalent cause of PC (62.8%) in our center.

The major morbidity (grades 3 and 4) occurred in eight patients (18.6%). Minor postoperative morbidities, such as ileus or delayed gastric emptying, wound infection, anastomosis leakage/fistula formation, and intra-abdominal abscess/collection were 9.3%, 2.3%, 2.3%, and 4.7%, respectively. The 60-day postoperative mortality rate was 7%.

Post-operative major morbidity has been reported in 36% of PC cases in the literature.<sup>20</sup> Low mortality rate (2.3%) and acceptable morbidity have also been reported in a recent study.<sup>21</sup>

This work experienced numerous limitations, including a small population and being cross-sectional and retrospective. Other confounding factors relate to the different PC origin and the role of the systemic therapy on the performance of isolated peritoneal disease.

## Conclusion

Our study supports that using CRS and HIPEC for PC is feasible with acceptable morbidity in our center. It should be noted that our results cannot be applied to every case with PC of all cancer origins. However,

we do believe that this treatment is practicable and safe for carefully selected patients.

### Acknowledgement

This study was supported by Shiraz University of Medical Sciences and approved with code xxx. The study was extracted from the thesis written by Samad Khezri for surgical oncology fellowship degree.

### Conflict of Interest

None declared.

### Reference

1. Sugarbaker PH. Prevention and treatment of peritoneal metastases: a comprehensive review. *Indian J Surg Oncol.* 2019;10(1):3-23. doi: 10.1007/s13193-018-0856-1.
2. Nikeghbalian S, Nikoupour H, Dehghani M, Karami MY, Hemati R. Cytoreductive surgery and hyperthermic intraoperative chemotherapy for management of peritoneal carcinomatosis. *Arch Iran Med.* 2018;21(4):158-63.
3. Sugarbaker PH. New standard of care for appendiceal epithelial neoplasms and pseudomyxoma peritonei syndrome? *Lancet Oncol.* 2006;7(1):69-76. doi: 10.1016/S1470-2045(05)70539-8.
4. Sugarbaker PH, Turaga KK, Alexander HR Jr, Deraco M, Hesdorffer M. Management of malignant peritoneal mesothelioma using cytoreductive surgery and perioperative chemotherapy. *J Oncol Pract.* 2016;12(10):928-935. doi: 10.1200/JOP.2016.011908.
5. Aoyagi T, Terracina KP, Raza A, Takabe K. Current treatment options for colon cancer peritoneal carcinomatosis. *World J Gastroenterol.* 2014;20(35):12493. doi: 10.3748/wjg.v20.i35.12493.
6. Tewari D, Java JJ, Salani R, Armstrong DK, Markman M, Herzog T, et al. Long-term survival advantage and prognostic factors associated with intraperitoneal chemotherapy treatment in advanced ovarian cancer: a gynecologic oncology group study. *J Clin Oncol.* 2015;33(13):1460. doi: 10.1200/JCO.2014.55.9898.
7. Koh JL, Yan TD, Glenn D, Morris DL. Evaluation of preoperative computed tomography in estimating peritoneal cancer index in colorectal peritoneal carcinomatosis. *Ann Surg Oncol.* 2009;16(2):327-33.
8. Strasberg SM. Nomenclature of hepatic anatomy and resections: a review of the Brisbane 2000 system. *J Hepatobiliary Pancreat Surg.* 2005;12(5):351-5. doi:10.1007/s00534-005-0999-7.
9. Sugarbaker PH. Intraperitoneal chemotherapy and cytoreductive surgery for the prevention and treatment of peritoneal carcinomatosis and sarcomatosis. *Semin Surg Oncol.* 1998;14(3):254-61. doi: 10.1002/(sici)1098-2388(199804/05)14:3<254::aid-ssu10>3.0.co;2-u.
10. Carmignani CP, Esquivel J, Sugarbaker PH. Cytoreductive surgery and intraperitoneal chemotherapy for the treatment of peritoneal surface malignancy. *Revista de Oncología.* 2003;5(4):192-8.
11. Dindo D, Demartines N, Clavien PA. Classification of surgical complications: a new proposal with evaluation in a cohort of 6336 patients and results of a survey. *Ann Surg.* 2004;240(2):205. doi: 10.1097/01.sla.0000133083.54934.ae.
12. Muñoz-Casares FC, Medina-Fernández FJ, Arjona-Sánchez Á, Casado-Adam Á, Sánchez-Hidalgo JM, Rubio MJ, et al. Peritonectomy procedures and HIPEC in the treatment of peritoneal carcinomatosis from ovarian cancer: Long-term outcomes and perspectives from a high-volume center. *Eur J Surg Oncol.* 2016;42(2):224-33. doi: 10.1016/j.ejso.2015.11.006.

13. Chua TC, Moran BJ, Sugarbaker PH, Levine EA, Glehen O, Gilly FN, et al. Early- and long-term outcome data of patients with pseudomyxoma peritonei from appendiceal origin treated by a strategy of cytoreductive surgery and hyperthermic intraperitoneal chemotherapy. *J Clin Oncol.* 2012;30(20):2449-56. doi: 10.1200/JCO.2011.39.7166.
14. Helm JH, Miura JT, Glenn JA, Marcus RK, Larrieux G, Jayakrishnan TT, et al. Cytoreductive surgery and hyperthermic intraperitoneal chemotherapy for malignant peritoneal mesothelioma: a systematic review and meta-analysis. *Ann Surg oncol.* 2015;22(5):1686-93. doi: 10.1245/s10434-014-3978-x.
15. Glehen O, Gilly FN, Arvieux C, Cotte E, Boutitie F, Mansvelt B, et al. Peritoneal carcinomatosis from gastric cancer: a multi-institutional study of 159 patients treated by cytoreductive surgery combined with perioperative intraperitoneal chemotherapy. *Ann Surg Oncol.* 2010;17(9):2370-7.
16. Spiliotis J, Halkia E, De Bree E. Treatment of peritoneal surface malignancies with hyperthermic intraperitoneal chemotherapy—current perspectives. *Curr Oncol.* 2016;23(3):e266. doi:10.3747/co.23.2831.
17. van Driel WJ, Koole SN, Sikorska K, Schagen van Leeuwen JH, Schreuder HWR, Hermans RHM, et al. Hyperthermic Intraperitoneal Chemotherapy in Ovarian Cancer. *N Engl J Med.* 2018;378(3):230-40. doi: 10.1056/NEJMoa1708618.
18. Huo YR, Richards A, Liauw W, Morris DL. Hyperthermic intraperitoneal chemotherapy (HIPEC) and cytoreductive surgery (CRS) in ovarian cancer: A systematic review and meta-analysis. *Eur J Surg Oncol.* 2015;41(12):1578-89. doi: 10.1016/j.ejso.2015.08.172.
19. Wang Y, Ren F, Chen P, Liu S, Song Z, Ma X. Effects of CytoReductive surgery plus hyperthermic IntraPERitoneal chemotherapy (HIPEC) versus CytoReductive surgery for ovarian cancer patients: A systematic review and meta-analysis. *Eur J Surg Oncol.* 2019;45(3):301-9. doi: 10.1016/j.ejso.2018.10.528.
20. Robella M, Vaira M, Cinquegrana A, De Simone M. Cytoreductive surgery and hyperthermic intraperitoneal chemotherapy: morbidity and postoperative outcomes. *Minerva Chir.* 2019;74(3):195-202. doi: 10.23736/s0026-4733.18.07649-6.
21. Piso P, Nedelcut SD, Rau B, Königsrainer A, Glockzin G, Ströhlein MA, et al. Morbidity and mortality following cytoreductive surgery and hyperthermic intraperitoneal chemotherapy: Data from the DGAV StuDoQ registry with 2149 consecutive patients. *Ann Surg Oncol.* 2019;26(1):148-54. doi: 10.1245/s10434-018-6992-6.

Table 1. Patient demographic, operative, and survival data

Characteristics		Overall patients (n = 43), (%)	
Age		52.23 ± 11.82	
Weight (Kg)		64.37 ± 12.46	
Height (cm)		161.60 ± 5.74	
BMI (Kg/cm <sup>2</sup> )		24.26 ± 4.09	
Sex	Male	7 (16.3)	
	Female	36 (83.7)	
Comorbidity disease	DM	5 (11.6)	
	CVA	5 (11.6)	
	Smoking	3 (7)	
	Pulmonary disease	2 (4.7)	
Primary tumor site	Colorectal (%)	8 (18.6)	
	Appendix (%)	3 (7)	
	Ovarian cancer (%)	27 (62.8)	
	Gastric cancer (%)	3 (7)	
	Mesothelioma (%)	1 (2.3)	
	Uterus	1 (2.3)	
Previous chemotherapy (during prior treatment)	Yes	35 (81.4)	
	No	8 (18.6)	
Neo-adjuvant chemotherapy (before CRS/HIPEC)	Yes	32 (74.4)	
	No	11 (25.6)	
Adjuvant chemotherapy	Yes	40 (90.7)	
	No	4 (9.3)	
Histopathology	Ovary	Papillary serous cystadenocarcinoma of ovary	16 (37.20)
		Mucinous	10 (23.25)
		Clear cell	1 (2.32)
	Appendix	Adenocarcinoma	2 (4.65)
		Mucinous neoplasm	1 (2.32)
	Colon	Adenocarcinoma	8 (18.60)
	Stomach	Poorly differentiated Adenocarcinoma	3 (7)
	Other	Primary peritoneal carcinoma	1 (2.32)
		Mesothelioma	1 (2.32)
Previous surgery	USO		5 (11.62)
	TAH-BSO ± Debulking Surgery		18 (41.9)
	Abdominal exploration		3 (7)
	Appendectomy		2 (4.6)
	Distal gastrectomy		1 (2.3)
	Hemi colectomy		3 (7)
	Left hemicolectomy and splenectomy		1 (2.3)

	Colostomy	1 (2.3)
	Without surgery	9 (20.9)
Duration of procedure minutes		368.79 ± 95.88
PCI score		8.79 ± 5.83
Bleeding mL		528.84 ± 564.64
ICU stay, median day (range )		2 (0-32)
Hospital stay, median day (range)		7 (2-48)
HIPEC drug	Cisplatin	32(74.4)
	Mitomycine	11 (25.6)
HIPEC type	Open	42 (97.7)
	Close	1 (2.3)
Ileostomy	Yes	3
	No	40
Colostomy	Yes	3
	No	40
Anastomosis	SB-SB	4 (8.16)
	SB-Colon	5 (10.20)
	Colon-Colon	6 (12.24)
	Colon-Rectum	2 (4.08)
	Esophago-SB	3 (6.12)
	None	29 (59.18)
Peritonectomy site	Upper abdomen	6 (14.63)
	Parietal	9 (21.95)
	Pelvic	24 (58.53)
	Total	2 (4.87)
Peritonectomy	Yes	31 (72.09)
	No	12 (27.9)
CC Score	0	32 (74.4)
	1	6 (13.9)
	2	4 (9.3)
	3	1 (2.3)
Mortality at 60 days, No. (%)		3 (7)
Overall mortality, No. (%)		12 (27.9)
Overall survival, No. (%)		31 (72.1)
Surgical morbidity, No. (%)	No complication	35 (81.4)
	Wound infection	1 (2.3)
	Intra-abdominal abscess/collection	2 (4.7)
	Ileus or DGE >7 days (delayed gastric emptying)	4 (9.3)
	Leak/fistula	1 (2.3)
Minor and major complications, Clavien-Dindo classification	2	32 (74.41)
	3	5 (11.62)
	4	3 (6.97)
	5	3(6.97)
Reoperation	Yes	3 (7)
	No	40 (93)
Reoperation cause	Anastomosis leak	1 (33.3)
	Collection	1 (33.3)



		Colostomy necrosis	1 (33.3)
Readmission	Yes		2 (4.7)
	No		41 (95.3)
Reoperation cause	Obstruction		1 (50)
	Wound infection		1 (50)

CCS: Completeness cytoreductive surgery; PCI: Peritoneal cancer index; HIPEC: Hyperthermic intraperitoneal chemotherapy; SD: Standard deviation; BMI: Body mass index; DM: Diabetes mellitus; CVA: Cardiovascular accident; TAH-BSO: Total abdominal hysterectomy and bilateral salpingo-oophorectomy; USO: Unilateral salpingo-oophorectomy; DGE: Delayed gastric emptying; SB: Small Bowel

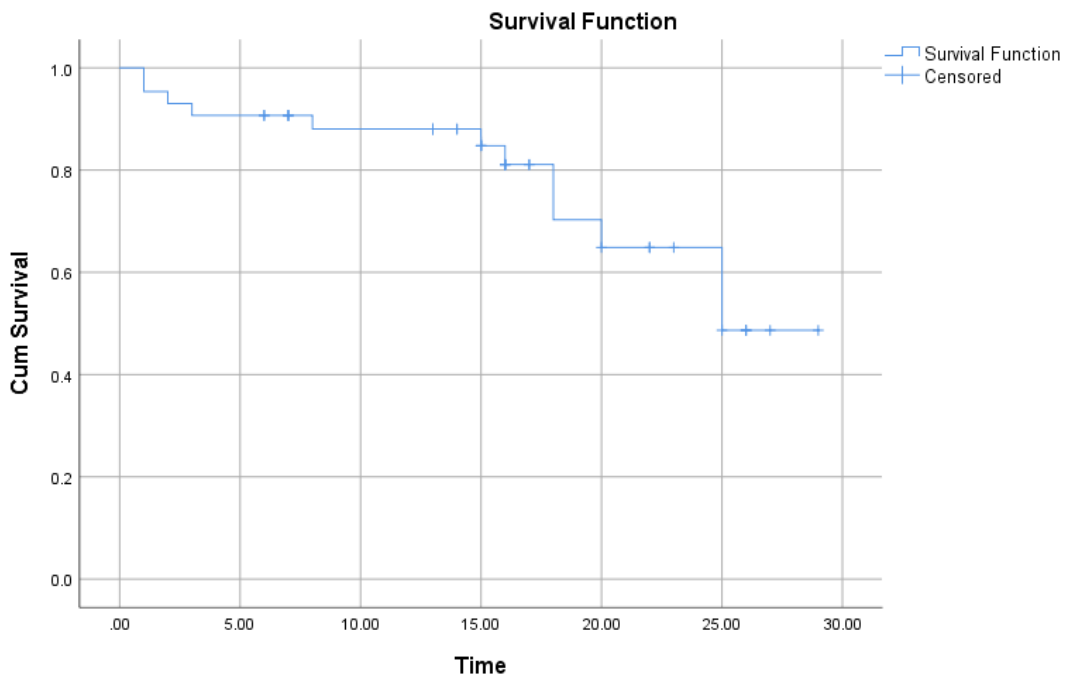


Figure 1. This figure portrays the overall survival (month) of the patients undergoing CRS and HIPEC (Kaplan-Meier curve).

HIPEC: Hyperthermic intraperitoneal chemotherapy; Cum: Cumulative